

ADD1 (Ab-726) Antibody



PACO23604

Product Information

Size:

100ul

Reactivity:

Human, Mouse, Rat

Source:

Rabbit

Isotype:

IgG

Applications:

ELISA, WB, IHC, IF

Recommended dilutions:

ELISA:1:2000-1:10000, WB:1:500-1:3000,
IHC:1:50-1:100, IF:1:100-1:500

Protein Background:

Membrane-cytoskeleton-associated protein that promotes the assembly of the spectrin-actin network. Binds to calmodulin.

Gene ID:

ADD1

Uniprot

P35611

Synonyms:

ADDA; Alpha adducin; Erythrocyte adducin alpha subunit;

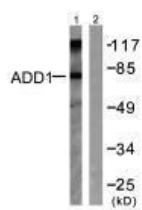
Immunogen:

Synthesized non-phosphopeptide derived from human ADD1 around the phosphorylation site of serine 726 (T-P-S(p)-F-L).

Storage:

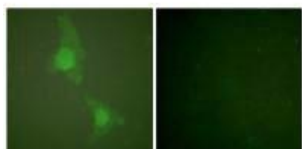
Rabbit IgG in phosphate buffered saline (without Mg²⁺ and Ca²⁺), pH 7.4, 150mM NaCl, 0.02% sodium azide and 50% glycerol.

Product Images



Western blot analysis of extracts from HeLa cells treated with Forskolin (40nM, 30min), using ADD1 (Ab-726) antibody.

Immunofluorescence analysis of HeLa cells, using ADD1 (Ab-726) antibody.



Immunohistochemical analysis of paraffin-embedded human brain tissue using ADD1 (Ab-726) antibody.

