

# PLCG1 (Ab-771) Antibody



PACO23608

---

## Product Information

**Size:**

100ul

**Reactivity:**

Human, Mouse, Rat

**Source:**

Rabbit

**Isotype:**

IgG

**Applications:**

ELISA, WB, IHC

**Recommended dilutions:**

ELISA:1:2000-1:10000, WB:1:500-1:3000,  
IHC:1:50-1:100

**Protein Background:**

Mediates the production of the second messenger molecules diacylglycerol (DAG) and inositol 1,4,5-trisphosphate (IP3). Plays an important role in the regulation of intracellular signaling cascades. Becomes activated in response to ligand-mediated activation of receptor-type tyrosine kinases, such as PDGFRA, PDGFRB, FGFR1, FGFR2, FGFR3 and FGFR4. Plays a role in actin reorganization and cell migration.

**Gene ID:**

PLCG1

**Uniprot**

P19174

**Synonyms:**

Phospholipase C gamma 1; PLC148; PHOSPHOLIPASE C-148;

**Immunogen:**

Synthesized non-phosphopeptide derived from human PLCG1 around the phosphorylation site of tyrosine 771 (P-D-Y-G-A).

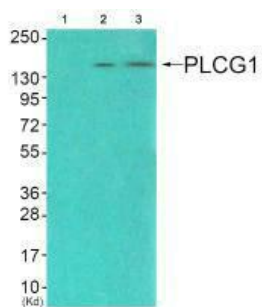
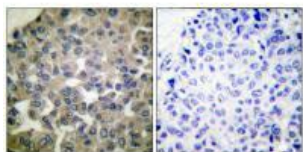
**Storage:**

Rabbit IgG in phosphate buffered saline (without Mg<sup>2+</sup> and Ca<sup>2+</sup>), pH 7.4, 150mM NaCl, 0.02% sodium azide and 50% glycerol.

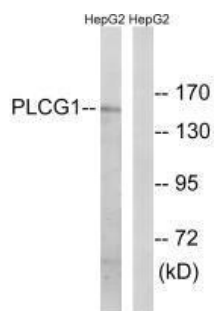
## Product Images

---

Immunohistochemical analysis of paraffin-embedded human breast carcinoma tissue using PLCG1 (Ab-771) antibody.



Western blot analysis of extracts from COS7 cells (Lane 2), and JK cells (Lane 3), using PLCG1 (Ab-771) antibody. The lane on the left is treated with synthesized peptide.



Western blot analysis of extracts from COS7 cells treated with EGF (200ng/ml, 30min), using PLCG1 (Ab-771) antibody.