

RPS6KA1 (Ab-573) Antibody



PACO23611

Product Information

Size:

100ul

Reactivity:

Human, Mouse, Rat

Source:

Rabbit

Isotype:

IgG

Applications:

ELISA, WB, IHC

Recommended dilutions:

ELISA:1:2000-1:10000, WB:1:500-1:3000,
IHC:1:50-1:100

Protein Background:**Gene ID:**

RPS6KA1

Uniprot

Q15418

Synonyms:

90 kDa ribosomal protein S6 kinase 1; EC 2.7.11.1; KS6A1; MAPKAP-K1a; RPS6KA1

Immunogen:

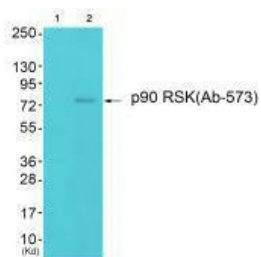
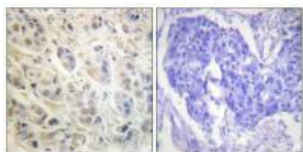
Synthesized non-phosphopeptide derived from human p90 RSK around the phosphorylation site of threonine 573 (L-M-T(p)-P-C).

Storage:

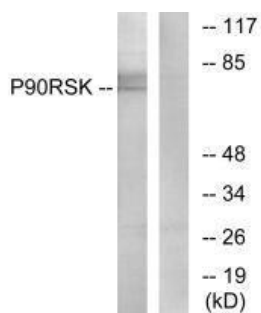
Rabbit IgG in phosphate buffered saline (without Mg²⁺ and Ca²⁺), pH 7.4, 150mM NaCl, 0.02% sodium azide and 50% glycerol.

Product Images

Immunohistochemistry analysis of paraffin-embedded human colon carcinoma tissue using p90 RSK (Ab-573) antibody.



Western blot analysis of extracts from 293 cells (Lane 2), using p90 RSK (Ab-573) antibody. The lane on the left is treated with synthesized peptide.



Western blot analysis of extracts from 3T3 cells, treated with PMA (125ng/ml, 30mins), using p90 RSK (Ab-573) antibody.