

MET (Ab-1003) Antibody



PACO23616

Product Information

Size:

100ul

Reactivity:

Human, Mouse, Rat

Source:

Rabbit

Isotype:

IgG

Applications:

ELISA, WB, IHC, IF

Recommended dilutions:

ELISA:1:2000-1:10000, WB:1:500-1:3000,
IHC:1:50-1:100, IF:1:100-1:500

Protein Background:**Gene ID:**

MET

Uniprot

P08581

Synonyms:

EC 2.7.10.1; HGF receptor; HGF-SF receptor; Hepatocyte growth factor receptor precursor; Met proto- oncogene tyrosine kinase

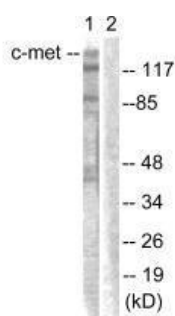
Immunogen:

Synthesized non-phosphopeptide derived from human c-Met around the phosphorylation site of tyrosine 1003 (V-D-Y(p)-R-A).

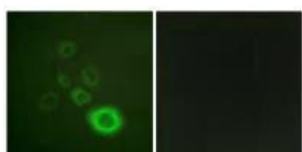
Storage:

Rabbit IgG in phosphate buffered saline (without Mg²⁺ and Ca²⁺), pH 7.4, 150mM NaCl, 0.02% sodium azide and 50% glycerol.

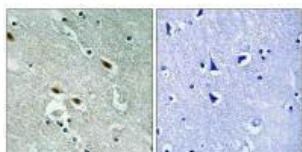
Product Images



Western blot analysis of extracts from HepG2 cells, using c-Met (Ab-1003) antibody.



Immunofluorescence analysis of A549 cells, using c-Met (Ab-1003) antibody.



Immunohistochemistry analysis of paraffin-embedded human brain tissue using c-Met (Ab-1003) antibody.