

# CTNND1 (Ab-228) Antibody



PACO23617

---

## Product Information

**Size:**

100ul

**Reactivity:**

Human, Mouse, Rat

**Source:**

Rabbit

**Isotype:**

IgG

**Applications:**

ELISA, WB, IHC

**Recommended dilutions:**

ELISA:1:2000-1:10000, WB:1:500-1:3000,  
IHC:1:50-1:100

**Protein Background:**

Binds to and inhibits the transcriptional repressor ZBTB33, which may lead to activation of target genes of the Wnt signaling pathway By similarity. Associates with and regulates the cell adhesion properties of both C-, E- and N-cadherins, being critical for their surface stability. Implicated both in cell transformation by SRC and in ligand-induced receptor signaling through the EGF, PDGF, CSF-1 and ERBB2 receptors. Promotes GLIS2 C-terminal cleavage.

**Gene ID:**

CTNND1

**Uniprot**

O60716

**Synonyms:**

CAS; CATNS; CTD1; CTND1; Cadherin-associated Src substrate

**Immunogen:**

Synthesized non-phosphopeptide derived from human Catenin- delta 1 around the phosphorylation site of tyrosine 228 (D-N-Y(p)-G-S).

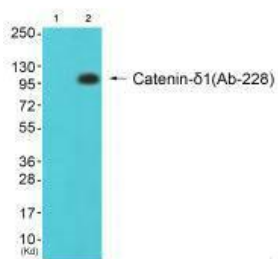
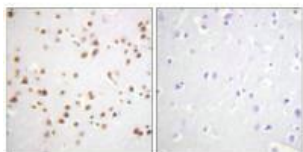
**Storage:**

Rabbit IgG in phosphate buffered saline (without Mg<sup>2+</sup> and Ca<sup>2+</sup>), pH 7.4, 150mM NaCl, 0.02% sodium azide and 50% glycerol.

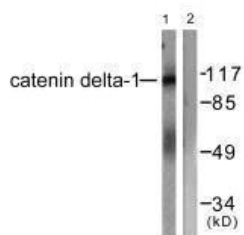
## Product Images

---

Immunohistochemistry analysis of paraffin-embedded human brain tissue using Catenin- delta 1 (Ab-228) antibody.



Western blot analysis of extracts from 293 cells (Lane 2), using Catenin- delta 1 (Ab-228) antibody. The lane on the left is treated with synthesized peptide.



Western blot analysis of extracts from HuvEc cells, using Catenin- delta 1 (Ab-228) antibody.