

SDC4 (Ab-179) Antibody



PACO23618

Product Information

Size:

100ul

Reactivity:

Human, Mouse, Rat

Source:

Rabbit

Isotype:

IgG

Applications:

ELISA, WB, IHC, IF

Recommended dilutions:

ELISA:1:2000-1:10000, WB:1:500-1:3000,
IHC:1:50-1:100, IF:1:100-1:500

Protein Background:

Cell surface proteoglycan that bears heparan sulfate.

Gene ID:

SDC4

Uniprot

P31431

Synonyms:

Amphiglycan; Ryudocan core protein; SDC4; SYND4; Syndecan-4 precursor

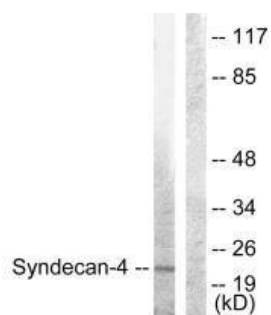
Immunogen:

Synthesized non-phosphopeptide derived from human Syndecan4 around the phosphorylation site of serine 179 (E-G-S(p)-Y-D).

Storage:

Rabbit IgG in phosphate buffered saline (without Mg²⁺ and Ca²⁺), pH 7.4, 150mM NaCl, 0.02% sodium azide and 50% glycerol.

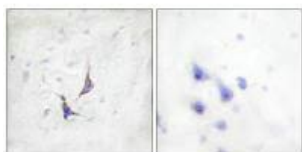
Product Images



Western blot analysis of extracts from HepG2 cells, using Syndecan4 (Ab-179) antibody.



Immunofluorescence analysis of HeLa cells, using Syndecan4 (Ab-179) antibody.



Immunohistochemistry analysis of paraffin-embedded human brain tissue using Syndecan4 (Ab-179) antibody.