

# PPP1R2 (Ab-120/121) Antibody



PACO23620

---

## Product Information

**Size:**

100ul

**Reactivity:**

Human, Mouse, Rat

**Source:**

Rabbit

**Isotype:**

IgG

**Applications:**

ELISA, WB, IHC

**Recommended dilutions:**

ELISA:1:2000-1:10000, WB:1:500-1:3000,  
IHC:1:50-1:100

**Protein Background:**

Inhibitor of protein-phosphatase 1.

**Gene ID:**

PPP1R2

**Uniprot**

P41236

**Synonyms:**

I-2; IPP-2; IPP2; Protein phosphatase inhibitor 2;

**Immunogen:**

Synthesized non-phosphopeptide derived from human PPP1R2 around the phosphorylation site of serine 120 and serine 121 (Q-E-S(p)-S(p)-G-E).

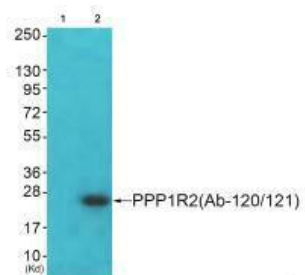
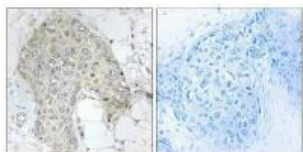
**Storage:**

Rabbit IgG in phosphate buffered saline (without Mg<sup>2+</sup> and Ca<sup>2+</sup>), pH 7.4, 150mM NaCl, 0.02% sodium azide and 50% glycerol.

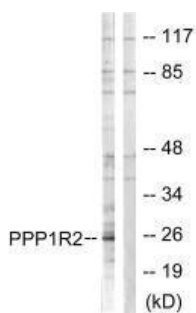
## Product Images

---

Immunohistochemistry analysis of paraffin-embedded human breast carcinoma tissue using PPP1R2 (Ab-120/121) antibody.



Western blot analysis of extracts from JK cells (Lane 2), using PPP1R2 (Ab-120/121) antibody. The lane on the left is treated with synthesized peptide.



Western blot analysis of extracts from Jurkat cells, using PPP1R2 (Ab-120/121) antibody.