

# Atp1a1 (Ab-23) Antibody



PACO23621

---

## Product Information

**Size:**

100ul

**Reactivity:**

Human, Rat

**Source:**

Rabbit

**Isotype:**

IgG

**Applications:**

ELISA, WB, IF

**Recommended dilutions:**

ELISA:1:2000-1:10000, WB:1:500-1:3000,  
IF:1:100-1:500

**Protein Background:**

This is the catalytic component of the active enzyme, which catalyzes the hydrolysis of ATP coupled with the exchange of sodium and potassium ions across the plasma membrane. This action creates the electrochemical gradient of sodium and potassium ions, providing the energy for active transport of various nutrients.

**Gene ID:**

Atp1a1

**Uniprot**

P06685

**Synonyms:**

A1A1; AT1A1; ATPase; Na<sup>+</sup>/K<sup>+</sup> transporting; alpha 1 polypeptide

**Immunogen:**

Synthesized non-phosphopeptide derived from human ATP1 alpha 1/Na<sup>+</sup>K<sup>+</sup> ATPase1 around the phosphorylation site of serine 23 (K-K-S(p)-K-K).

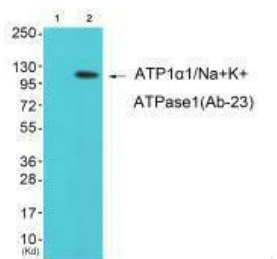
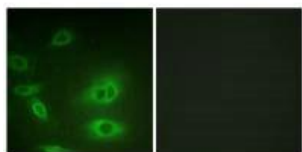
**Storage:**

Rabbit IgG in phosphate buffered saline (without Mg<sup>2+</sup> and Ca<sup>2+</sup>), pH 7.4, 150mM NaCl, 0.02% sodium azide and 50% glycerol.

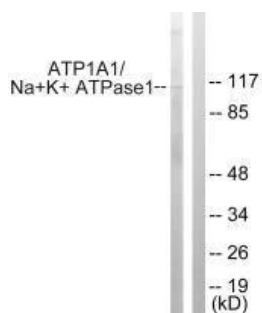
## Product Images

---

Immunofluorescence analysis of HeLa cells, using ATP1alpha 1/Na+K+ ATPase1 (Ab-23) antibody.



Western blot analysis of extracts from K562 cells (Lane 2), using ATP1 alpha 1/Na+K+ ATPase1 (Ab-23) antibody. The lane on the left is treated with synthesized peptide.



Western blot analysis of extracts from HeLa cells, using ATP1 alpha 1/Na+K+ ATPase1 (Ab-23) antibody.