

MAP3K7 (Ab-187) Antibody



PACO23628

Product Information

Size:

100ul

Reactivity:

Human, Mouse

Source:

Rabbit

Isotype:

IgG

Applications:

ELISA, WB, IHC

Recommended dilutions:

ELISA:1:2000-1:10000, WB:1:500-1:3000,
IHC:1:50-1:100

Protein Background:

Gene ID:

MAP3K7

Uniprot

O43318

Synonyms:

EC 2.7.11.25; kinase TAK1; M3K7; MAP3K7; Mitogen-activated protein kinase kinase 7

Immunogen:

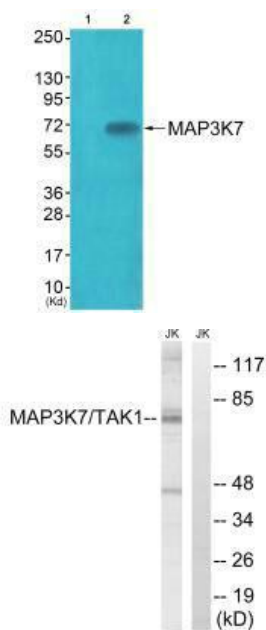
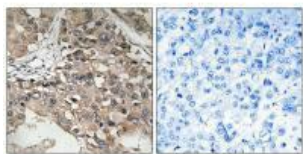
Synthesized non-phosphopeptide derived from human MAP3K7 around the phosphorylation site of threonine 187 (H-M-T(p)-N-N).

Storage:

Rabbit IgG in phosphate buffered saline (without Mg²⁺ and Ca²⁺), pH 7.4, 150mM NaCl, 0.02% sodium azide and 50% glycerol.

Product Images

Immunohistochemistry analysis of paraffin-embedded human breast carcinoma tissue using MAP3K7 (Ab-187) antibody.



Western blot analysis of extracts from JK cells (Lane 2), using MAP3K7 (Ab-187) antibody. The lane on the left is treated with synthesized peptide.

Western blot analysis of extracts from Jurkat cells, treated with heat shock, using MAP3K7 (Ab-187) antibody.