

PAK1 (Ab-204) Antibody



PACO23629

Product Information

Size:

100ul

Reactivity:

Human, Mouse

Source:

Rabbit

Isotype:

IgG

Applications:

ELISA, WB, IHC

Recommended dilutions:

ELISA:1:2000-1:10000, WB:1:500-1:3000,
IHC:1:50-1:100

Protein Background:**Gene ID:**

PAK1

Uniprot

Q13153

Synonyms:

ADRB2; alpha-PAK; CDC42/RAC effector kinase PAK-A; EC 2.7.11.1; kinase PAK1

Immunogen:

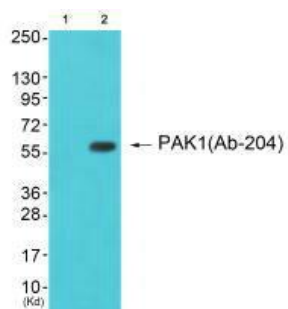
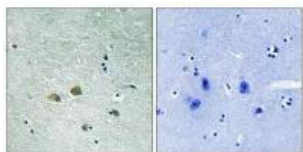
Synthesized non-phosphopeptide derived from human PAK1 around the phosphorylation site of serine 204 (T-R-S(p)-V-I).

Storage:

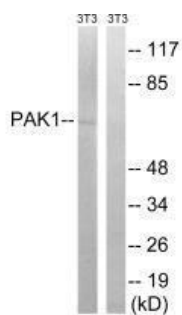
Rabbit IgG in phosphate buffered saline (without Mg²⁺ and Ca²⁺), pH 7.4, 150mM NaCl, 0.02% sodium azide and 50% glycerol.

Product Images

Immunohistochemistry analysis of paraffin-embedded human brain tissue using PAK1 (Ab-204) antibody.



Western blot analysis of extracts from cos-7 cells (Lane 2), using PAK1 (Ab-204) antibody. The lane on the left is treated with synthesized peptide.



Western blot analysis of extracts from 3T3 cells, treated with UV (15mins), using PAK1 (Ab-204) antibody.