

PACO23636

Product Information

Size:

100ul

Reactivity:

Human

Source:

Rabbit

Isotype:

IgG

Applications:

ELISA, WB, IHC, IF

Recommended dilutions:

ELISA:1:2000-1:10000, WB:1:500-1:3000,
IHC:1:50-1:100, IF:1:100-1:500

Protein Background:

This gene encodes a protein that contains a caspase recruitment domain (CARD), an antiparallel six-helical bundle that mediates homotypic protein-protein interactions. The encoded protein is a microtubule-associated protein that has been shown to interact with receptor-interacting protein kinases and positively modulate signal transduction pathways converging on activation of the inducible transcription factor NF- κ B.

Gene ID:

CARD6

Uniprot

Q52LR2

Synonyms:

Caspase recruitment domain-containing protein 6; CARD6;

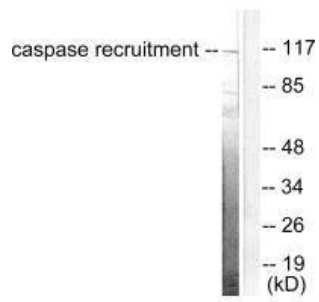
Immunogen:

Synthesized peptide derived from human CARD6.

Storage:

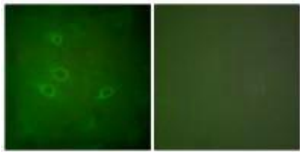
Rabbit IgG in phosphate buffered saline (without Mg²⁺ and Ca²⁺), pH 7.4, 150mM NaCl, 0.02% sodium azide and 50% glycerol.

Product Images



Western blot analysis of extracts from HeLa cells, using CARD6 antibody.

Immunofluorescence analysis of HeLa cells, using CARD6 antibody.



Immunohistochemical analysis of paraffin-embedded human breast carcinoma tissue using CARD6 antibody.

