

CLDN5 Antibody



PACO23642

Product Information

Size:

100ul

Reactivity:

Human, Mouse, Rat

Source:

Rabbit

Isotype:

IgG

Applications:

ELISA, WB, IHC

Recommended dilutions:

ELISA:1:2000-1:10000, WB:1:500-1:3000,
IHC:1:50-1:100

Protein Background:

Plays a major role in tight junction-specific obliteration of the intercellular space By similarity.

Gene ID:

CLDN5

Uniprot

O00501

Synonyms:

CLD5; CLDN5; TMDVCF; Transmembrane protein deleted in VCFS;

Immunogen:

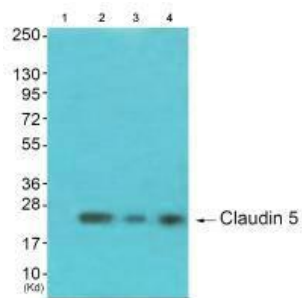
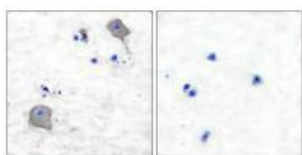
Synthesized peptide derived from human CLDN5.

Storage:

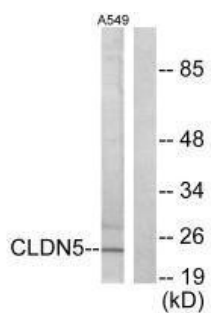
Rabbit IgG in phosphate buffered saline (without Mg²⁺ and Ca²⁺), pH 7.4, 150mM NaCl, 0.02% sodium azide and 50% glycerol.

Product Images

Immunohistochemical analysis of paraffin-embedded human brain tissue using Claudin 5 antibody.



Western blot analysis of extracts from 293 cells (Lane 2), K562 cells (Lane 3) and 3T3 cells (Lane 4), using Claudin 5 antibody. The lane on the left is treated with synthesized peptide.



Western blot analysis of extracts from A549 cells, using Claudin 5 antibody.