

PACO23645

Product Information

Size:

100ul

Reactivity:

Human, Mouse

Source:

Rabbit

Isotype:

IgG

Applications:

ELISA, WB, IHC, IF

Recommended dilutions:

ELISA:1:2000-1:10000, WB:1:500-1:3000,
IHC:1:50-1:100, IF:1:100-1:500

Protein Background:

Acetylates histones, giving a specific tag for transcriptional activation. Also acetylates non-histone proteins, like NCOA3 and FOXO1. Binds specifically to phosphorylated CREB and enhances its transcriptional activity toward cAMP-responsive genes. Acts as a coactivator of ALX1 in the presence of EP300. Acts as a circadian transcriptional coactivator which enhances the activity of the circadian transcriptional activators: NPAS2-ARNTL/BMAL1 and CLOCK-ARNTL/BMAL1 heterodimers.

Gene ID:

CREBBP

Uniprot

Q92793

Synonyms:

CREB-binding protein; CBP CBP/MOZ FUSION GENE;

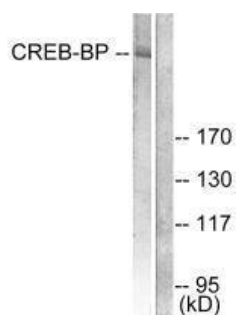
Immunogen:

Synthesized peptide derived from human CREB-BP.

Storage:

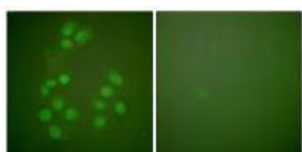
Rabbit IgG in phosphate buffered saline (without Mg²⁺ and Ca²⁺), pH 7.4, 150mM NaCl, 0.02% sodium azide and 50% glycerol.

Product Images



Western blot analysis of extracts from HeLa cells, treated with insulin (0.01U/ml, 15mins), using CREB-BP antibody.

Immunofluorescence analysis of A549 cells, using CREB-BP antibody.



Immunohistochemical analysis of paraffin-embedded human breast carcinoma tissue using CREB-BP antibody.

