

### Product Information

**Size:**

100ul

**Reactivity:**

Human, Mouse

**Source:**

Rabbit

**Isotype:**

IgG

**Applications:**

ELISA, WB, IHC

**Recommended dilutions:**

ELISA:1:2000-1:10000, WB:1:500-1:3000,  
IHC:1:50-1:100

**Protein Background:**

Isoform 1: Non-catalytic component of a structure-specific DNA repair endonuclease responsible for the 5'-incision during DNA repair. Responsible, in conjunction with SLX4, for the first step in the repair of interstrand cross-links (ICL). Participates in the processing of anaphase bridge-generating DNA structures, which consist in incompletely processed DNA lesions arising during S or G2 phase, and can result in cytokinesis failure. Also required for homology-directed repair (HDR) of DNA double-strand breaks, in conjunction with SLX4.

**Gene ID:**

ERCC1

**Uniprot**

P07992

**Synonyms:**

UV20; DNA REPAIR DEFECT UV-20 OF CHINESE HAMSTER OVARY CELLS; COMPLEMENTATION OF EXCISION-REPAIR; COMPLEMENTING DEFECTIVE IN CHINESE HAMSTER; excision repair cross-complementing 1 isoform 1

**Immunogen:**

Synthesized peptide derived from human ERCC1.

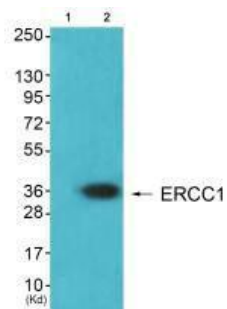
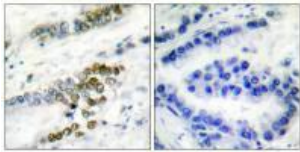
**Storage:**

Rabbit IgG in phosphate buffered saline (without Mg<sup>2+</sup> and Ca<sup>2+</sup>), pH 7.4, 150mM NaCl, 0.02% sodium azide and 50% glycerol.

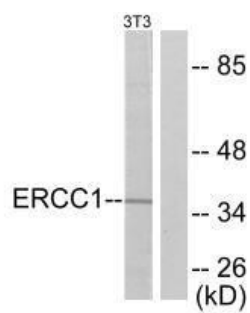
## Product Images

---

Immunohistochemical analysis of paraffin-embedded human lung carcinoma tissue using ERCC1 antibody.



Western blot analysis of extracts from Hela cells (Lane 2), using ERCC1 antibody. The lane on the left is treated with synthesized peptide.



Western blot analysis of extracts from NIH/3T3 cells, using ERCC1 antibody.