

PACO23652

Product Information

Size:

100ul

Reactivity:

Human, Mouse, Rat

Source:

Rabbit

Isotype:

IgG

Applications:

ELISA, WB, IHC

Recommended dilutions:

ELISA:1:2000-1:10000, WB:1:500-1:3000,
IHC:1:50-1:100

Protein Background:

Probably involved in connections of major cytoskeletal structures to the plasma membrane. In epithelial cells, required for the formation of microvilli and membrane ruffles on the apical pole. Along with PLEKHG6, required for normal macropinocytosis.

Gene ID:

EZR

Uniprot

P15311

Synonyms:

CVIL; CVL; CYTOVILLIN;

Immunogen:

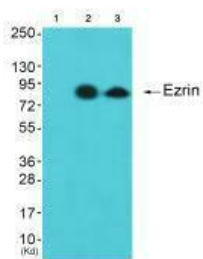
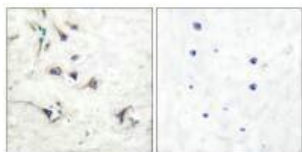
Synthesized peptide derived from human Ezrin.

Storage:

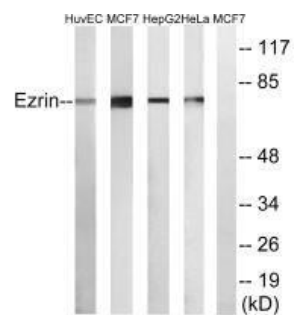
Rabbit IgG in phosphate buffered saline (without Mg²⁺ and Ca²⁺), pH 7.4, 150mM NaCl, 0.02% sodium azide and 50% glycerol.

Product Images

Immunohistochemical analysis of paraffin-embedded human brain tissue using Ezrin antibody.



Western blot analysis of extracts from cos-7 cells (Lane 2) and 3T3 cells (Lane 3), using Ezrin antibody. The lane on the left is treated with synthesized peptide.



Western blot analysis of extracts from NIH/3T3 cells, using Ezrin antibody.