

SCGB2A1 Antibody



PACO23680

Product Information

Size:

100ul

Reactivity:

Human

Source:

Rabbit

Isotype:

IgG

Applications:

ELISA, WB, IHC

Recommended dilutions:

ELISA:1:2000-1:10000, WB:1:500-1:3000,
IHC:1:50-1:100

Protein Background:

May bind androgens and other steroids, may also bind estramustine, a chemotherapeutic agent used for prostate cancer. May be under transcriptional regulation of steroid hormones.

Gene ID:

SCGB2A1

Uniprot

O75556

Synonyms:

LACRYGLOBIN; MGB2; MAMMAGLOBIN 2; MAMMAGLOBIN B; secretoglobin family 2A member 1

Immunogen:

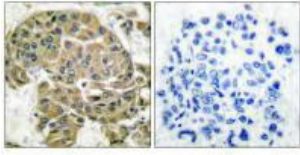
Synthesized peptide derived from human Mammaglobin B.

Storage:

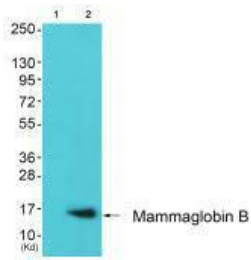
Rabbit IgG in phosphate buffered saline (without Mg²⁺ and Ca²⁺), pH 7.4, 150mM NaCl, 0.02% sodium azide and 50% glycerol.

Product Images

Immunohistochemical analysis of paraffin-embedded human breast carcinoma tissue using Mammaglobin B antibody.



Western blot analysis of extracts from 293 cells (Lane 2), using Mammaglobin B antibody. The lane on the left is treated with synthesized peptide.



Western blot analysis of extracts from HepG2 cells, using Mammaglobin B antibody.

