

Product Information

Size:

100ul

Reactivity:

Human, Mouse, Rat

Source:

Rabbit

Isotype:

IgG

Applications:

ELISA, WB, IHC

Recommended dilutions:

ELISA:1:2000-1:10000, WB:1:500-1:3000,
IHC:1:50-1:100

Protein Background:

Acts as component of the MCM2-7 complex (MCM complex) which is the putative replicative helicase essential for 'once per cell cycle' DNA replication initiation and elongation in eukaryotic cells. The active ATPase sites in the MCM2-7 ring are formed through the interaction surfaces of two neighboring subunits such that a critical structure of a conserved arginine finger motif is provided in trans relative to the ATP-binding site of the Walker A box of the adjacent subunit. The six ATPase active sites, however, are likely to contribute differentially to the complex helicase activity. Required for the entry in S phase and for cell division.

Gene ID:

MCM2

Uniprot

P49736

Synonyms:

BM28; CDCL1; DNA replication licensing factor MCM2; KIAA0030; MCMD2

Immunogen:

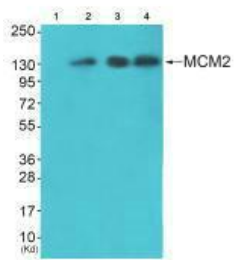
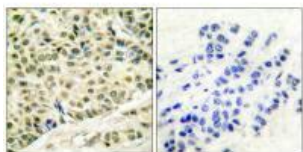
Synthesized peptide derived from human MCM2.

Storage:

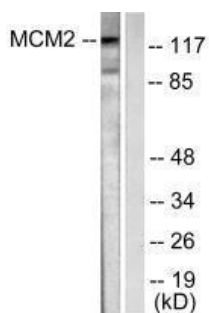
Rabbit IgG in phosphate buffered saline (without Mg²⁺ and Ca²⁺), pH 7.4, 150mM NaCl, 0.02% sodium azide and 50% glycerol.

Product Images

Immunohistochemical analysis of paraffin-embedded human breast carcinoma tissue using MCM2 antibody.



Western blot analysis of extracts from 3T3 cells (Lane 2), k562 cells (Lane 3) and HepG2 cells (Lane 4), using MCM2 antibody. The lane on the left is treated with synthesized peptide.



Western blot analysis of extracts from 293 cells, using MCM2 antibody.