

PTCH1 Antibody



PACO23691

Product Information

Size:

100ul

Reactivity:

Human, Mouse

Source:

Rabbit

Isotype:

IgG

Applications:

ELISA, WB, IHC

Recommended dilutions:

ELISA:1:2000-1:10000, WB:1:500-1:3000,
IHC:1:50-1:100

Protein Background:

Acts as a receptor for sonic hedgehog (SHH), indian hedgehog (IHH) and desert hedgehog (DHH). Associates with the smoothed protein (SMO) to transduce the hedgehog's proteins signal. Seems to have a tumor suppressor function, as inactivation of this protein is probably a necessary, if not sufficient step for tumorigenesis.

Gene ID:

PTCH1

Uniprot

Q13635

Synonyms:

DROSOPHILA HOMOLOG OF 1; patched homolog (Drosophila);

Immunogen:

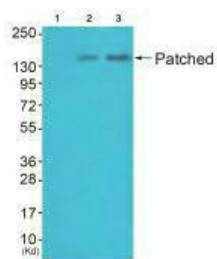
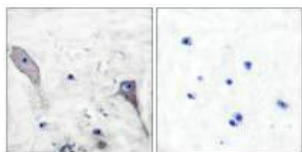
Synthesized peptide derived from human Patched.

Storage:

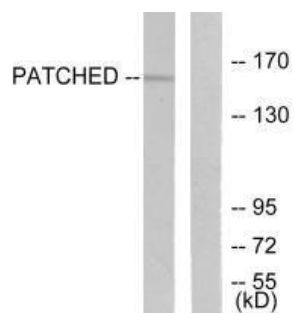
Rabbit IgG in phosphate buffered saline (without Mg²⁺ and Ca²⁺), pH 7.4, 150mM NaCl, 0.02% sodium azide and 50% glycerol.

Product Images

Immunohistochemical analysis of paraffin-embedded human brain tissue using Patched antibody.



Western blot analysis of extracts from 3T3 cells (Lane 2) and HepG2 cells (Lane 3), using Patched antibody. The lane on the left is treated with synthesized peptide.



Western blot analysis of extracts from mouse muscle cells, using Patched antibody.