

## Product Information

**Size:**

100ul

**Reactivity:**

Human, Mouse, Rat

**Source:**

Rabbit

**Isotype:**

IgG

**Applications:**

ELISA, WB, IHC

**Recommended dilutions:**

ELISA:1:2000-1:10000, WB:1:500-1:3000,  
IHC:1:50-1:100

**Protein Background:**

Ubiquitin-protein hydrolase involved both in the processing of ubiquitin precursors and of ubiquitinated proteins. This enzyme is a thiol protease that recognizes and hydrolyzes a peptide bond at the C-terminal glycine of ubiquitin. Also binds to free monoubiquitin and may prevent its degradation in lysosomes. The homodimer may have ATP-independent ubiquitin ligase activity.

**Gene ID:**

UCHL1

**Uniprot**

P09936

**Synonyms:**

UCH-L1; neuron cytoplasmic protein 9.5; ubiquitin carboxyl-terminal hydrolase isozyme L1; ubiquitin thiolesterase L1;

**Immunogen:**

Synthesized peptide derived from human PGP9.

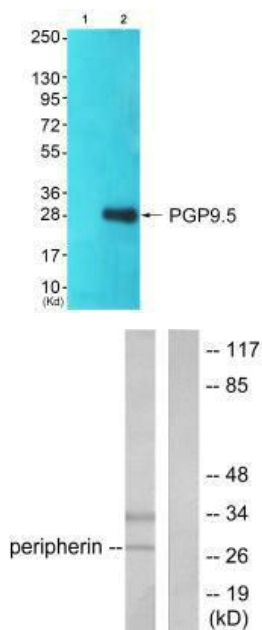
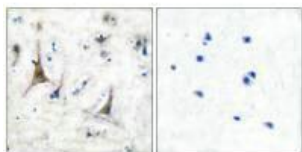
**Storage:**

Rabbit IgG in phosphate buffered saline (without Mg<sup>2+</sup> and Ca<sup>2+</sup>), pH 7.4, 150mM NaCl, 0.02% sodium azide and 50% glycerol.

## Product Images

---

Immunohistochemical analysis of paraffin-embedded human brain tissue using PGP9.5 antibody.



Western blot analysis of extracts from 293 cells (Lane 2), using PGP9.5 antibody. The lane on the left is treated with synthesized peptide.

Western blot analysis of extracts from 293 cells, using PGP9.5 antibody.