

PTPN11 Antibody



PACO23698

Product Information

Size:

100ul

Reactivity:

Human, Mouse, Rat

Source:

Rabbit

Isotype:

IgG

Applications:

ELISA, WB, IHC

Recommended dilutions:

ELISA:1:2000-1:10000, WB:1:500-1:3000,
IHC:1:50-1:100

Protein Background:

Acts downstream of various receptor and cytoplasmic protein tyrosine kinases to participate in the signal transduction from the cell surface to the nucleus. Dephosphorylates ROCK2 at Tyr-722 resulting in stimulation of its RhoA binding activity.

Gene ID:

PTPN11

Uniprot

Q06124

Synonyms:

PTN11; PTP-1D; PTP-2C; PTP2C; PTPN11

Immunogen:

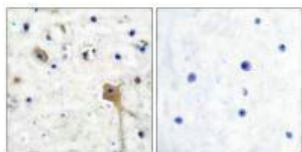
Synthesized peptide derived from human SH-PTP2.

Storage:

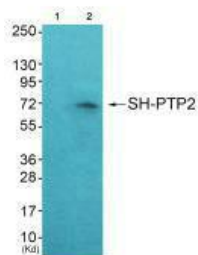
Rabbit IgG in phosphate buffered saline (without Mg²⁺ and Ca²⁺), pH 7.4, 150mM NaCl, 0.02% sodium azide and 50% glycerol.

Product Images

Immunohistochemical analysis of paraffin-embedded human brain tissue using SH-PTP2 antibody.



Western blot analysis of extracts from JK cells (Lane 2), using SH-PTP2 antibody. The lane on the left is treated with synthesized peptide.



Western blot analysis of extracts from COS7 cells, using SH-PTP2 antibody.

