

PACO23704

---

## Product Information

**Size:**

100ul

**Reactivity:**

Human, Mouse, Rat

**Source:**

Rabbit

**Isotype:**

IgG

**Applications:**

ELISA, WB, IF

**Recommended dilutions:**

ELISA:1:2000-1:10000, WB:1:500-1:3000,  
IF:1:100-1:500

**Protein Background:**

The heterodimer acts as a E1 ligase for SUMO1, SUMO2, SUMO3, and probably SUMO4. It mediates ATP-dependent activation of SUMO proteins followed by formation of a thioester bond between a SUMO protein and a conserved active site cysteine residue on UBA2/SAE2.

**Gene ID:**

SAE1

**Uniprot**

Q9UBE0

**Synonyms:**

AOS1; HSPC140; SAE1; SUA1; SUMO-1 activating enzyme E1 N subunit

**Immunogen:**

Synthesized peptide derived from Internal of human AOS1.

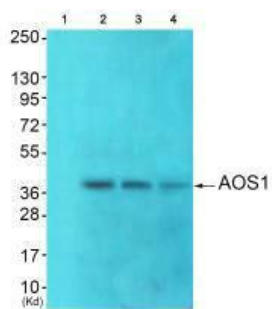
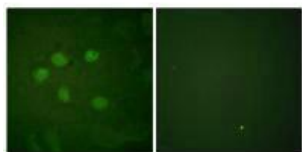
**Storage:**

Rabbit IgG in phosphate buffered saline (without Mg<sup>2+</sup> and Ca<sup>2+</sup>), pH 7.4, 150mM NaCl, 0.02% sodium azide and 50% glycerol.

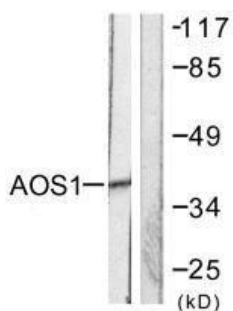
## Product Images

---

Immunofluorescence analysis of HuvEc cells, using AOS1 antibody.



Western blot analysis of extracts from Colo cells, HepG2 cells and 293 cells using AOS1 antibody. The lane on the left is treated with synthesized peptide.



Western blot analysis of extracts from 293 cells, using AOS1 antibody.