

EPHA2/EPHA3/EPHA4 (Ab-588/596) Antibody



PACO23718

Product Information

Size:

100ul

Reactivity:

Human, Mouse

Source:

Rabbit

Isotype:

IgG

Applications:

ELISA, WB, IF

Recommended dilutions:

ELISA:1:2000-1:10000, WB:1:500-1:3000,
IF:1:100-1:500

Protein Background:**Gene ID:**

EPHA2/EPHA3/EPHA4

Uniprot

P29317/P29320/P54764

Synonyms:

EC 2.7.10.1; ECK; Ephrin type-A receptor 2 precursor; Epithelial cell kinase; MPK-5

Immunogen:

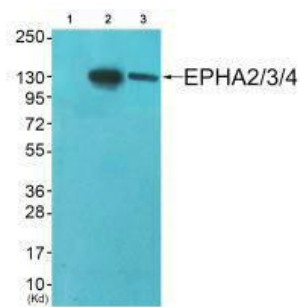
Synthesized non-phosphopeptide derived from human EPHA2/3/4 around the phosphorylation site of tyrosine 588/596 (T-Y(p)-V-D-P).

Storage:

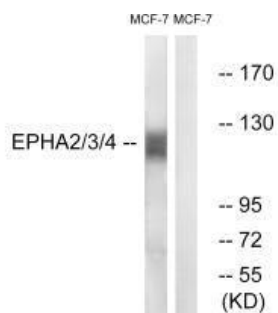
Rabbit IgG in phosphate buffered saline (without Mg²⁺ and Ca²⁺), pH 7.4, 150mM NaCl, 0.02% sodium azide and 50% glycerol.

Product Images

Immunofluorescence analysis of A549 cells, using EPHA2/3/4 (Ab-588/596) antibody.



Western blot analysis of extracts from A549 cells (Lane 2) and HepG2 cells (Lane 3), using EPHA2/3/4 (Ab-588/596) antibody. The lane on the left is treated with synthesized peptide.



Western blot analysis of extracts from MCF7 cells, using EPHA2/3/4 (Ab-588/596) antibody.