

PDLIM1 Antibody



PACO23719

Product Information

Size:

100ul

Reactivity:

Human, Mouse, Rat

Source:

Rabbit

Isotype:

IgG

Applications:

ELISA, WB, IHC, IF

Recommended dilutions:

ELISA:1:2000-1:10000, WB:1:500-1:3000,
IHC:1:50-1:100, IF:1:100-1:500

Protein Background:

Cytoskeletal protein that may act as an adapter that brings other proteins (like kinases) to the cytoskeleton.

Gene ID:

PDLIM1

Uniprot

O00151

Synonyms:

C-terminal LIM domain protein 1; CLP36; Elfin; LIM domain protein CLP-36; PDL1

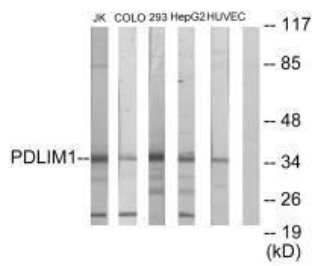
Immunogen:

Synthesized peptide derived from internal of human PDLIM1.

Storage:

Rabbit IgG in phosphate buffered saline (without Mg²⁺ and Ca²⁺), pH 7.4, 150mM NaCl, 0.02% sodium azide and 50% glycerol.

Product Images



Western blot analysis of extracts from Jurkat cells, COLO205 cells, 293 cells, HepG2 cells and HUVEC cells, using PDLIM1 antibody.

Immunofluorescence analysis of HepG2 cells, using PDLIM1 antibody.



Immunohistochemistry analysis of paraffin-embedded human heart tissue using PDLIM1 antibody.

