

### Product Information

**Size:**

100ul

**Reactivity:**

Human, Mouse

**Source:**

Rabbit

**Isotype:**

IgG

**Applications:**

ELISA, WB, IHC, IF

**Recommended dilutions:**

ELISA:1:2000-1:10000, WB:1:500-1:3000,  
IHC:1:50-1:100, IF:1:100-1:500

**Protein Background:**

This gene encodes a member of the microtubule-associated serine/threonine protein kinases. The proteins in this family contain a domain that gives the kinase the ability to determine its own scaffold to control the effects of their kinase activities. Alternative splicing results in multiple transcript variants encoding different isoforms.

**Gene ID:**

MAST4

**Uniprot**

O15021

**Synonyms:**

EC 2.7.11.1; KIAA0303; microtubule-associated serine/threonine-protein kinase 4;

**Immunogen:**

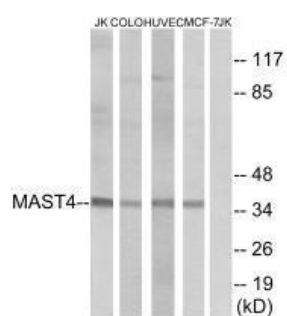
Synthesized peptide derived from internal of human MAST4.

**Storage:**

Rabbit IgG in phosphate buffered saline (without Mg<sup>2+</sup> and Ca<sup>2+</sup>), pH 7.4, 150mM NaCl, 0.02% sodium azide and 50% glycerol.

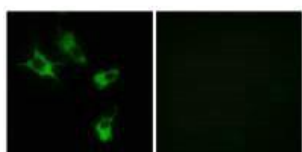
## Product Images

---



Western blot analysis of extracts from Jurkat cells, COLO cells, HUVEC cells and MCF-7 cells, using MAST4 antibody.

Immunofluorescence analysis of COS-7 cells, using MAST4 antibody.



Immunohistochemistry analysis of paraffin-embedded human testis tissue using MAST4 antibody.

