

Product Information

Size:

100ul

Reactivity:

Human, Mouse, Rat

Source:

Rabbit

Isotype:

IgG

Applications:

ELISA, WB, IHC, IF

Recommended dilutions:

ELISA:1:2000-1:10000, WB:1:500-1:3000,
IHC:1:50-1:100, IF:1:100-1:500

Protein Background:

Kinase-defective receptor for members of the ephrin-B family. Binds to ephrin-B1 and ephrin-B2. Modulates cell adhesion and migration by exerting both positive and negative effects upon stimulation with ephrin-B2. Inhibits JNK activation, T-cell receptor-induced IL-2 secretion and CD25 expression upon stimulation with ephrin-B2.

Gene ID:

EPHB6

Uniprot

O15197

Synonyms:

EPB6; Ephrin type-B receptor 6 precursor; HEP; Tyrosine-protein kinase-defective receptor EPH-6;

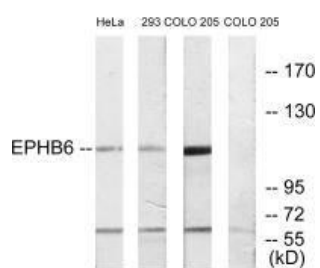
Immunogen:

Synthesized peptide derived from internal of human EPHB6.

Storage:

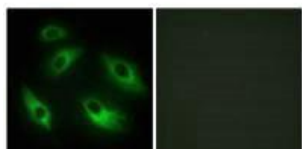
Rabbit IgG in phosphate buffered saline (without Mg²⁺ and Ca²⁺), pH 7.4, 150mM NaCl, 0.02% sodium azide and 50% glycerol.

Product Images



Western blot analysis of extracts from HeLa cells, 293 cells and COLO cells, using EPHB6 antibody.

Immunofluorescence analysis of HeLa cells, using EPHB6 antibody.



Immunohistochemistry analysis of paraffin-embedded human brain tissue using EPHB6 antibody.

