

PACO23727

---

## Product Information

**Size:**

100ul

**Reactivity:**

Human, Mouse, Rat

**Source:**

Rabbit

**Isotype:**

IgG

**Applications:**

ELISA, WB, IHC, IF

**Recommended dilutions:**

ELISA:1:2000-1:10000, WB:1:500-1:3000,  
IHC:1:50-1:100, IF:1:100-1:500

**Protein Background:**

Cytokine that binds to TNFRSF13B/TACI and to TNFRSF17/BCMA. Plays a role in the regulation of tumor cell growth. May be involved in monocyte/macrophage-mediated immunological processes.

**Gene ID:**

TNFSF13

**Uniprot**

O75888

**Synonyms:**

Tumor necrosis factor ligand superfamily member 13 [Precursor]; A proliferation-inducing ligand; APRIL; TNF- and APOL-related leukocyte expressed ligand 2; TALL-2

**Immunogen:**

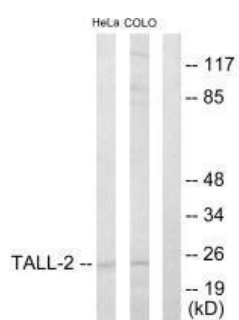
Synthesized peptide derived from internal of human TALL-2.

**Storage:**

Rabbit IgG in phosphate buffered saline (without Mg<sup>2+</sup> and Ca<sup>2+</sup>), pH 7.4, 150mM NaCl, 0.02% sodium azide and 50% glycerol.

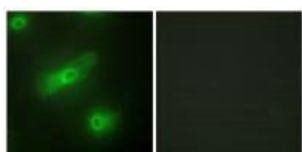
## Product Images

---



Western blot analysis of extracts from HeLa cells and COLO205 cells, using TALL-2 antibody.

Immunofluorescence analysis of HeLa cells, using TALL-2 antibody.



Immunohistochemistry analysis of paraffin-embedded human colon carcinoma tissue using TALL-2 antibody.

