
Product Information

Size:

100ul

Reactivity:

Human, Mouse, Rat

Source:

Rabbit

Isotype:

IgG

Applications:

ELISA, WB, IHC, IF

Recommended dilutions:

ELISA:1:2000-1:10000, WB:1:500-1:3000,
IHC:1:50-1:100, IF:1:100-1:500

Protein Background:

Reversibly catalyzes the transfer of phosphate between ATP and various phosphogens (e. g. creatine phosphate). Creatine kinase isoenzymes play a central role in energy transduction in tissues with large, fluctuating energy demands, such as skeletal muscle, heart, brain and spermatozoa.

Gene ID:

CKM

Uniprot

P06732

Synonyms:

CKM; CKMM. ; EC 2.7.3.2; KCRM; creatine kinase

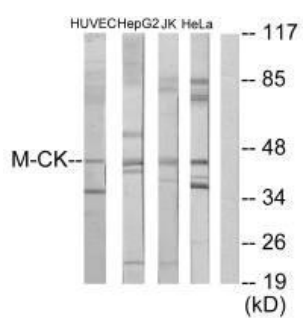
Immunogen:

Synthesized peptide derived from N-terminal of human M-CK.

Storage:

Rabbit IgG in phosphate buffered saline (without Mg²⁺ and Ca²⁺), pH 7.4, 150mM NaCl, 0.02% sodium azide and 50% glycerol.

Product Images



Western blot analysis of extracts from HUVEC cells, HepG2 cells, Jurkat cells and HeLa cells, using M-CK antibody.

Immunofluorescence analysis of HepG2 cells, using M-CK antibody.



Immunohistochemistry analysis of paraffin-embedded human heart tissue using M-CK antibody.

