

ACTN2/ACTN3 Antibody



PACO23739

Product Information

Size:

100ul

Reactivity:

Human, Mouse, Rat

Source:

Rabbit

Isotype:

IgG

Applications:

ELISA, WB, IHC, IF

Recommended dilutions:

ELISA:1:2000-1:10000, WB:1:500-1:3000,
IHC:1:50-1:100, IF:1:100-1:500

Protein Background:

F-actin cross-linking protein which is thought to anchor actin to a variety of intracellular structures. This is a bundling protein.

Gene ID:

ACTN2/ACTN3

Uniprot

P35609/Q08043

Synonyms:

Alpha-actinin-2; Alpha-actinin skeletal muscle isoform 2; F-actin cross-linking protein; ACTN2;

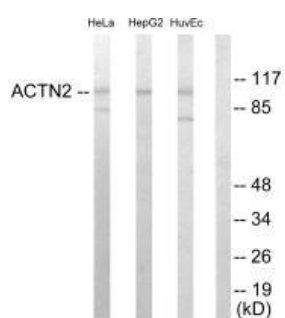
Immunogen:

Synthesized peptide derived from N-terminal of human Actin alpha -2/3.

Storage:

Rabbit IgG in phosphate buffered saline (without Mg²⁺ and Ca²⁺), pH 7.4, 150mM NaCl, 0.02% sodium azide and 50% glycerol.

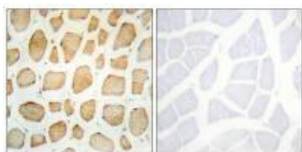
Product Images



Western blot analysis of extracts from HeLa cells, HepG2 cells and HUVEC cells, using Actin alpha -2/3 antibody.



Immunofluorescence analysis of HeLa cells, using Actin alpha -2/3 antibody.



Immunohistochemistry analysis of paraffin-embedded human skeletal muscle tissue using Actin alpha -2/3 antibody.