

Product Information

Size:

100ul

Reactivity:

Human, Mouse

Source:

Rabbit

Isotype:

IgG

Applications:

ELISA, WB, IHC, IF

Recommended dilutions:

ELISA:1:2000-1:10000, WB:1:500-1:3000,
IHC:1:50-1:100, IF:1:100-1:500

Protein Background:

Probable muscle-intrinsic activator of MUSK that plays an essential role in neuromuscular synaptogenesis. Acts in aneural activation of MUSK and subsequent acetylcholine receptor (AChR) clustering in myotubes. Induces autophosphorylation of MUSK.

Gene ID:

DOK7

Uniprot

Q18PE1

Synonyms:

Dok-7; downstream of tyrosine kinase 7;

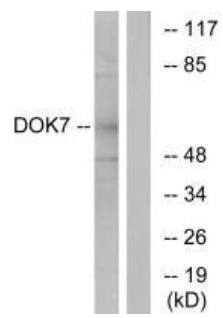
Immunogen:

Synthesized peptide derived from N-terminal of human DOK7.

Storage:

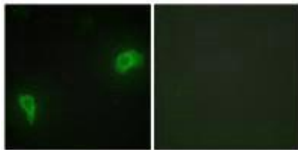
Rabbit IgG in phosphate buffered saline (without Mg²⁺ and Ca²⁺), pH 7.4, 150mM NaCl, 0.02% sodium azide and 50% glycerol.

Product Images



Western blot analysis of extracts from mouse brain cells, using DOK7 antibody.

Immunofluorescence analysis of HepG2 cells, using DOK7 antibody.



Immunohistochemistry analysis of paraffin-embedded human brain tissue using DOK7 antibody.

