

PACO23752

Product Information

Size:

100ul

Reactivity:

Human

Source:

Rabbit

Isotype:

IgG

Applications:

ELISA, WB, IHC, IF

Recommended dilutions:

ELISA:1:2000-1:10000, WB:1:500-1:3000,
IHC:1:50-1:100, IF:1:100-1:500

Protein Background:

Belongs to the protein kinase superfamily. CMGC Ser/Thr protein kinase family. CDC2/CDKX subfamily.

Gene ID:

CDKL4

Uniprot

Q5MAI5

Synonyms:

EC 2.7.11.22; Cyclin-dependent kinase-like 4; CDKL4;

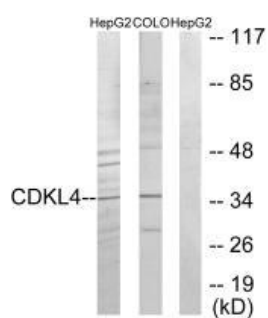
Immunogen:

Synthesized peptide derived from C-terminal of human CDKL4.

Storage:

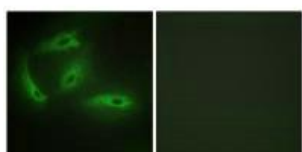
Rabbit IgG in phosphate buffered saline (without Mg²⁺ and Ca²⁺), pH 7.4, 150mM NaCl, 0.02% sodium azide and 50% glycerol.

Product Images



Western blot analysis of extracts from HepG2 cells and COLO205 cells, using CDKL4 antibody.

Immunofluorescence analysis of HeLa cells, using CDKL4 antibody.



Immunohistochemistry analysis of paraffin-embedded human lung carcinoma tissue using CDKL4 antibody.

