

PACO23757

Product Information

Size:

100ul

Reactivity:

Human, Mouse, Rat

Source:

Rabbit

Isotype:

IgG

Applications:

ELISA, WB, IHC, IF

Recommended dilutions:

ELISA:1:2000-1:10000, WB:1:500-1:3000,
IHC:1:50-1:100, IF:1:100-1:500

Protein Background:

Does not appear to have detectable kinase activity.

Gene ID:

CAMKV

Uniprot

Q8NCB2

Synonyms:

CaM kinase-like vesicle-associated protein;

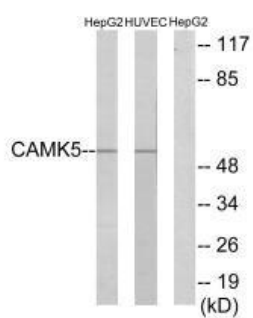
Immunogen:

Synthesized peptide derived from internal of human CAMK5.

Storage:

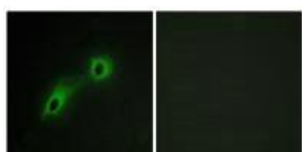
Rabbit IgG in phosphate buffered saline (without Mg²⁺ and Ca²⁺), pH 7.4, 150mM NaCl, 0.02% sodium azide and 50% glycerol.

Product Images



Western blot analysis of extracts from HepG2 cells and HUVEC cells, using CAMK5 antibody.

Immunofluorescence analysis of HeLa cells, using CAMK5 antibody.



Immunohistochemistry analysis of paraffin-embedded human brain tissue using CAMK5 antibody.

