

Product Information

Size:

100ul

Reactivity:

Human

Source:

Rabbit

Isotype:

IgG

Applications:

ELISA, WB, IHC, IF

Recommended dilutions:

ELISA:1:2000-1:10000, WB:1:500-1:3000,
IHC:1:50-1:100, IF:1:100-1:500

Protein Background:

This gene encodes a protein that is related to epidermal growth factor receptor pathway substrate 8 (EPS8), a substrate for the epidermal growth factor receptor. The function of this protein is unknown. Alternatively spliced transcript variants encoding different isoforms exist.

Gene ID:

EPS8L3

Uniprot

Q8TE67

Synonyms:

Epidermal growth factor receptor pathway substrate 8-related protein 3; EPS8-like protein 3;

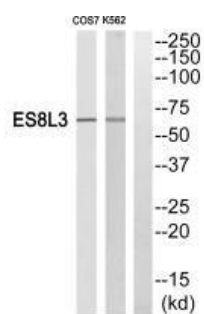
Immunogen:

Synthesized peptide derived from internal of human ES8L3.

Storage:

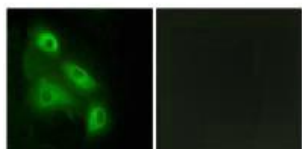
Rabbit IgG in phosphate buffered saline (without Mg²⁺ and Ca²⁺), pH 7.4, 150mM NaCl, 0.02% sodium azide and 50% glycerol.

Product Images



Western blot analysis of extracts from Cos7 cells and K562 cells, using ES8L3 antibody.

Immunofluorescence analysis of HeLa cells, using ES8L3 antibody.



Immunohistochemistry analysis of paraffin-embedded human colon carcinoma tissue, using ES8L3 antibody.

