

MUC13 Antibody



PACO23767

Product Information

Size:

100ul

Reactivity:

Human

Source:

Rabbit

Isotype:

IgG

Applications:

ELISA, WB, IHC, IF

Recommended dilutions:

ELISA:1:2000-1:10000, WB:1:500-1:3000,
IHC:1:50-1:100, IF:1:100-1:500

Protein Background:

Epithelial and hemopoietic transmembrane mucin that may play a role in cell signaling.

Gene ID:

MUC13

Uniprot

Q9H3R2

Synonyms:

Mucin-13 [Precursor]; Down-regulated in colon cancer 1; MUC13; DRCC1; RECC

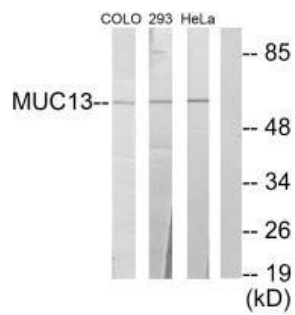
Immunogen:

Synthesized peptide derived from internal of human MUC13.

Storage:

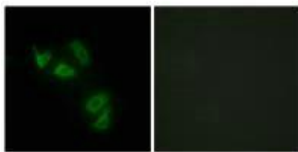
Rabbit IgG in phosphate buffered saline (without Mg²⁺ and Ca²⁺), pH 7.4, 150mM NaCl, 0.02% sodium azide and 50% glycerol.

Product Images



Western blot analysis of extracts from COLO cells, 293 cells and HeLa cells, using MUC13 antibody.

Immunofluorescence analysis of HepG2 cells, using MUC13 antibody.



Immunohistochemistry analysis of paraffin-embedded human colon carcinoma tissue using MUC13 antibody.

