

PACO23772

Product Information

Size:

100ul

Reactivity:

Human

Source:

Rabbit

Isotype:

IgG

Applications:

ELISA, WB, IHC, IF

Recommended dilutions:

ELISA:1:2000-1:10000, WB:1:500-1:3000,
IHC:1:50-1:100, IF:1:100-1:500

Protein Background:

Substrate-specific adapter of a BCR (BTB-CUL3-RBX1) E3 ubiquitin ligase complex that acts as a regulator of ion transport in the distal nephron. The BCR(KLHL3) complex acts by mediating ubiquitination of WNK4, an inhibitor of potassium channel KCNJ1, leading to WNK4 degradation.

Gene ID:

KLHL3

Uniprot

Q9UH77/Q8N4I8

Synonyms:

Kelch-like protein 3; KIAA1129;

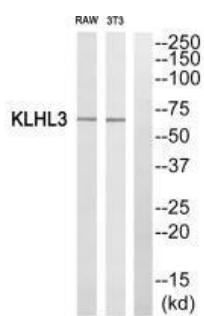
Immunogen:

Synthesized peptide derived from N-terminal of human KLHL3.

Storage:

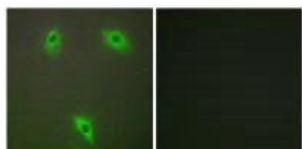
Rabbit IgG in phosphate buffered saline (without Mg²⁺ and Ca²⁺), pH 7.4, 150mM NaCl, 0.02% sodium azide and 50% glycerol.

Product Images



Western blot analysis of extracts from RAW264.7 cells and 3T3 cells, using KLHL3 antibody.

Immunofluorescence analysis of A549 cells, using KLHL3 antibody.



Immunohistochemistry analysis of paraffin-embedded human brain tissue, using KLHL3 antibody.

