

PACO23786

---

## Product Information

**Size:**

100ul

**Reactivity:**

Human, Mouse

**Source:**

Rabbit

**Isotype:**

IgG

**Applications:**

ELISA, WB, IHC, IF

**Recommended dilutions:**

ELISA:1:2000-1:10000, WB:1:500-1:3000,  
IHC:1:50-1:100, IF:1:100-1:500

**Protein Background:**

Binding to cells via a high affinity receptor, laminin is thought to mediate the attachment, migration and organization of cells into tissues during embryonic development by interacting with other extracellular matrix components.

**Gene ID:**

LAMA4

**Uniprot**

Q16363

**Synonyms:**

Laminin subunit alpha-4 [Precursor]; LAMA4;

**Immunogen:**

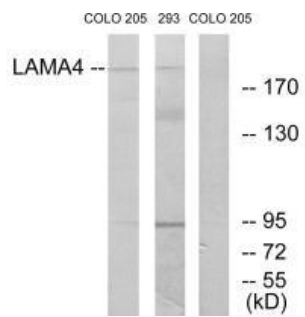
Synthesized peptide derived from internal of human LAMA4.

**Storage:**

Rabbit IgG in phosphate buffered saline (without Mg<sup>2+</sup> and Ca<sup>2+</sup>), pH 7.4, 150mM NaCl, 0.02% sodium azide and 50% glycerol.

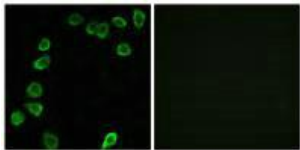
## Product Images

---



Western blot analysis of extracts from COLO cells and 293 cells, using LAMA4 antibody.

Immunofluorescence analysis of NIH/3T3 cells, using LAMA4 antibody.



Immunohistochemistry analysis of paraffin-embedded human heart tissue using LAMA4 antibody.

