

Product Information

Size:

100ul

Reactivity:

Human, Mouse

Source:

Rabbit

Isotype:

IgG

Applications:

ELISA, WB, IHC, IF

Recommended dilutions:

ELISA:1:2000-1:10000, WB:1:500-1:3000,
IHC:1:50-1:100, IF:1:100-1:500

Protein Background:

Binding to cells via a high affinity receptor, laminin is thought to mediate the attachment, migration and organization of cells into tissues during embryonic development by interacting with other extracellular matrix components.

Gene ID:

LAMC3

Uniprot

Q9Y6N6

Synonyms:

Laminin subunit gamma-3; Laminin 12 gamma 3 subunit;

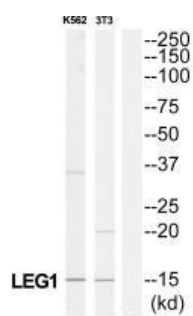
Immunogen:

Synthesized peptide derived from internal of human LAMC3.

Storage:

Rabbit IgG in phosphate buffered saline (without Mg²⁺ and Ca²⁺), pH 7.4, 150mM NaCl, 0.02% sodium azide and 50% glycerol.

Product Images



Western blot analysis of extracts from K562 cells and 3T3 cells, using LAMC3 antibody.

Immunofluorescence analysis of LOVO cells, using LAMC3 antibody.



Immunohistochemistry analysis of paraffin-embedded human brain tissue using LAMC3 antibody.

