

### Product Information

**Size:**

100ul

**Reactivity:**

Human

**Source:**

Rabbit

**Isotype:**

IgG

**Applications:**

ELISA, WB, IHC, IF

**Recommended dilutions:**

ELISA:1:2000-1:10000, WB:1:500-1:3000,  
IHC:1:50-1:100, IF:1:100-1:500

**Protein Background:**

Acyl-CoA synthetase involved in bile acid metabolism. Proposed to catalyze the first step in the conjugation of C24 bile acids (choloneates) to glycine and taurine before excretion into bile canaliculi by activating them to their CoA thioesters. Seems to activate secondary bile acids entering the liver from the enterohepatic circulation. In vitro, also activates 3-alpha,7-alpha,12-alpha-trihydroxy-5-beta-cholestanate (THCA), the C27 precursor of cholic acid deriving from the de novo synthesis from cholesterol.

**Gene ID:**

SLC27A5

**Uniprot**

Q9Y2P5

**Synonyms:**

EC 6.2.1.7; FACVL3; FATP5; MGC143799; S27A5

**Immunogen:**

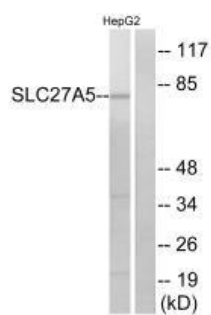
Synthesized peptide derived from internal of human SLC27A5.

**Storage:**

Rabbit IgG in phosphate buffered saline (without Mg<sup>2+</sup> and Ca<sup>2+</sup>), pH 7.4, 150mM NaCl, 0.02% sodium azide and 50% glycerol.

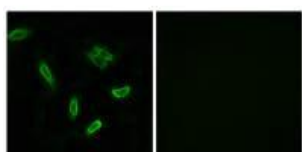
## Product Images

---



Western blot analysis of extracts from HepG2 cells, using SLC27A5 antibody.

Immunofluorescence analysis of A549 cells, using SLC27A5 antibody.



Immunohistochemistry analysis of paraffin-embedded human liver carcinoma tissue using SLC27A5 antibody.

