

PACO23799

Product Information

Size:

100ul

Reactivity:

Human, Mouse, Rat

Source:

Rabbit

Isotype:

IgG

Applications:

ELISA, WB, IHC, IF

Recommended dilutions:

ELISA:1:2000-1:10000, WB:1:500-1:3000,
IHC:1:50-1:100, IF:1:100-1:500

Protein Background:

Has both beta-1,3-glucuronic acid and beta-1,4-N-acetylgalactosamine transferase activity. Transfers glucuronic acid (GlcUA) from UDP-GlcUA and N-acetylgalactosamine (GalNAc) from UDP-GalNAc to the non-reducing end of the elongating chondroitin polymer. Isoform 2 may facilitate PARK2 transport into the mitochondria. In collaboration with PARK2, isoform 2 may enhance cell viability and protect cells from oxidative stress.

Gene ID:

CHPF

Uniprot

Q8IZ52

Synonyms:

CHSS2; DKFZP434E0423; EC 2.4.1.175; EC 2.4.1.226;

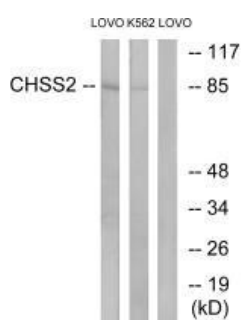
Immunogen:

Synthesized peptide derived from internal of human CHSS2.

Storage:

Rabbit IgG in phosphate buffered saline (without Mg²⁺ and Ca²⁺), pH 7.4, 150mM NaCl, 0.02% sodium azide and 50% glycerol.

Product Images



Western blot analysis of extracts from LOVO cells and K562 cells, using CHSS2 antibody.

Immunofluorescence analysis of MCF-7 cells, using CHSS2 antibody.



Immunohistochemistry analysis of paraffin-embedded human cervix carcinoma tissue using CHSS2 antibody.

