

Product Information

Size:

100ul

Reactivity:

Human, Mouse, Rat

Source:

Rabbit

Isotype:

IgG

Applications:

ELISA, WB, IHC, IF

Recommended dilutions:

ELISA:1:2000-1:10000, WB:1:500-1:3000,
IHC:1:50-1:100, IF:1:100-1:500

Protein Background:

May play an important role in cardiac antiarrhythmia via the strong suppression of voltage-gated L-type Ca²⁺ currents. Regulates voltage-dependent L-type calcium channel subunit alpha-1C trafficking to the cell membrane By similarity. Inhibits cardiac hypertrophy through the calmodulin-dependent kinase II (CaMKII) pathway. Inhibits phosphorylation and activation of CAMK2D.

Gene ID:

RRAD

Uniprot

P55042

Synonyms:

GTP-binding protein RAD; RAD; RAD1; RAS associated with diabetes;

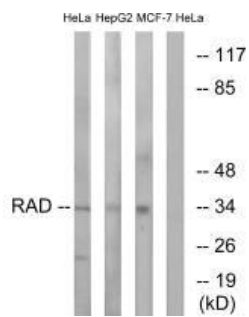
Immunogen:

Synthesized peptide derived from internal of human RAD.

Storage:

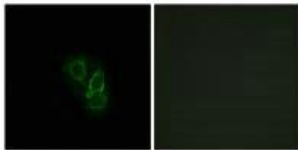
Rabbit IgG in phosphate buffered saline (without Mg²⁺ and Ca²⁺), pH 7.4, 150mM NaCl, 0.02% sodium azide and 50% glycerol.

Product Images



Western blot analysis of extracts from HeLa cells, HepG2 cells and MCF-7 cells, using RAD antibody.

Immunofluorescence analysis of A549 cells, using RAD antibody.



Immunohistochemistry analysis of paraffin-embedded human heart tissue using RAD antibody.

