

# HSP90AB1 (Ab-254) Antibody



PACO23806

---

## Product Information

**Size:**

100ul

**Reactivity:**

Human, Mouse, Rat

**Source:**

Rabbit

**Isotype:**

IgG

**Applications:**

ELISA, WB, IHC, IF

**Recommended dilutions:**

ELISA:1:2000-1:10000, WB:1:500-1:3000,  
IHC:1:50-1:100, IF:1:100-1:500

**Protein Background:**

Molecular chaperone that promotes the maturation, structural maintenance and proper regulation of specific target proteins involved for instance in cell cycle control and signal transduction. Undergoes a functional cycle that is linked to its ATPase activity. This cycle probably induces conformational changes in the client proteins, thereby causing their activation. Interacts dynamically with various co-chaperones that modulate its substrate recognition, ATPase cycle and chaperone function.

**Gene ID:**

HSP90AB1

**Uniprot**

P08238

**Synonyms:**

HS90B; HSP 84; HSP90-beta; HSP90AB1; HSPC2

**Immunogen:**

Synthesized non-phosphopeptide derived from human HSP90B around the phosphorylation site of serine 254 (V-G-S(p)-D-E).

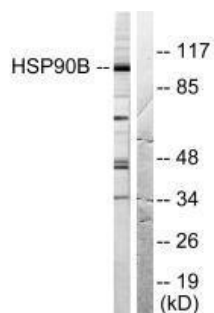
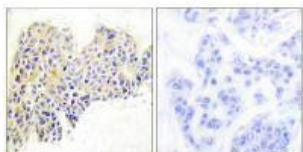
**Storage:**

Rabbit IgG in phosphate buffered saline (without Mg<sup>2+</sup> and Ca<sup>2+</sup>), pH 7.4, 150mM NaCl, 0.02% sodium azide and 50% glycerol.

## Product Images

---

Immunohistochemical analysis of paraffin-embedded human breast carcinoma tissue using HSP90B (Ab-254) antibody.



Western blot analysis of extracts from HeLa cells treated with TNF- alpha (20ng/ml, 30min), using HSP90B (Ab-254) antibody.

Immunofluorescence analysis of HeLa cells, treated with TNF-a (20nM, 15mins), using HSP90B (Ab-254) antibody.

