

CSF1R (Ab-809) Antibody



PACO23812

Product Information

Size:

100ul

Reactivity:

Human, Mouse

Source:

Rabbit

Isotype:

IgG

Applications:

ELISA, WB, IHC, IF

Recommended dilutions:

ELISA:1:2000-1:10000, WB:1:500-1:3000,
IHC:1:50-1:100, IF:1:100-1:500

Protein Background:**Gene ID:**

CSF1R

Uniprot

P07333

Synonyms:

CD115; CSF-1-R; CSF1R; CSFMR; EC 2.7.10.1

Immunogen:

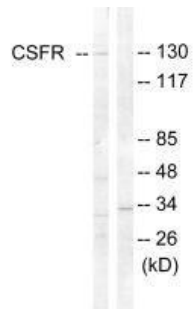
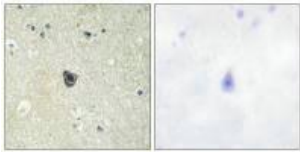
Synthesized non-phosphopeptide derived from human CSFR around the phosphorylation site of tyrosine 809 (S-N-Y(p)-I-V).

Storage:

Rabbit IgG in phosphate buffered saline (without Mg²⁺ and Ca²⁺), pH 7.4, 150mM NaCl, 0.02% sodium azide and 50% glycerol.

Product Images

Immunohistochemistry analysis of paraffin-embedded human brain tissue using CSFR (Ab-809) antibody.



Western blot analysis of extracts from HT-29 cells, using CSFR (Ab-809) antibody.

Immunofluorescence analysis of HeLa cells, using CSFR (Ab-809) antibody.

