

PACO23816

Product Information

Size:

100ul

Reactivity:

Human, Mouse, Rat

Source:

Rabbit

Isotype:

IgG

Applications:

ELISA, WB, IHC, IF

Recommended dilutions:

ELISA:1:2000-1:10000, WB:1:500-1:3000,
IHC:1:50-1:100, IF:1:100-1:500

Protein Background:

Type II collagen is specific for cartilaginous tissues. It is essential for the normal embryonic development of the skeleton, for linear growth and for the ability of cartilage to resist compressive forces.

Gene ID:

COL2A1

Uniprot

P02458

Synonyms:

chondrocalcin; CO2A1; collagen alpha-1 (II); collagen type II alpha 1;

Immunogen:

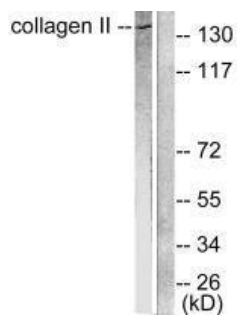
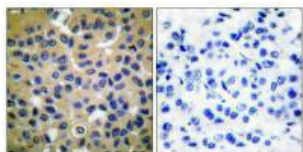
Synthesized peptide derived from human Collagen II.

Storage:

Rabbit IgG in phosphate buffered saline (without Mg²⁺ and Ca²⁺), pH 7.4, 150mM NaCl, 0.02% sodium azide and 50% glycerol.

Product Images

Immunohistochemical analysis of paraffin-embedded human breast carcinoma tissue using Collagen II antibody.



Western blot analysis of extracts from COLO205 cells, using Collagen II antibody.

Immunofluorescence analysis of COS7 cells, using Collagen II antibody.

