

# CCNA1 Antibody



PACO23820

---

## Product Information

**Size:**

100ul

**Reactivity:**

Human, Mouse

**Source:**

Rabbit

**Isotype:**

IgG

**Applications:**

ELISA, WB, IHC, IF

**Recommended dilutions:**

ELISA:1:2000-1:10000, WB:1:500-1:3000,  
IHC:1:50-1:100, IF:1:100-1:500

**Protein Background:**

May be involved in the control of the cell cycle at the G1/S (start) and G2/M (mitosis) transitions. May primarily function in the control of the germline meiotic cell cycle and additionally in the control of mitotic cell cycle in some somatic cells.

**Gene ID:**

CCNA1

**Uniprot**

P78396

**Synonyms:**

Cyclin A1;

**Immunogen:**

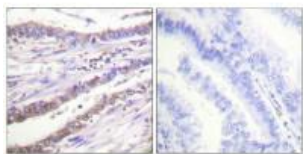
Synthesized peptide derived from human Cyclin A.

**Storage:**

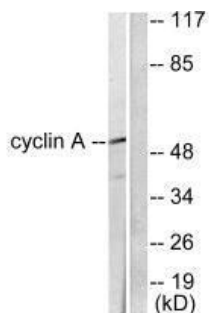
Rabbit IgG in phosphate buffered saline (without Mg<sup>2+</sup> and Ca<sup>2+</sup>), pH 7.4, 150mM NaCl, 0.02% sodium azide and 50% glycerol.

## Product Images

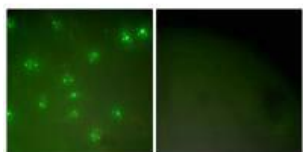
---



Immunohistochemical analysis of paraffin-embedded human lung carcinoma tissue using Cyclin A antibody.



Western blot analysis of extracts from COS7 cells, using Cyclin A antibody.



Immunofluorescence analysis of COS7 cells, using Cyclin A antibody.