

PRKDC Antibody



PACO23823

Product Information

Size:

100ul

Reactivity:

Human, Mouse

Source:

Rabbit

Isotype:

IgG

Applications:

ELISA, WB, IHC, IF

Recommended dilutions:

ELISA:1:2000-1:10000, WB:1:500-1:3000,
IHC:1:50-1:100, IF:1:100-1:500

Protein Background:

Gene ID:

PRKDC

Uniprot

P78527

Synonyms:

DNA- PKcs; DNA-dependent protein kinase catalytic subunit; DNP1; EC 2.7.11.1; P460

Immunogen:

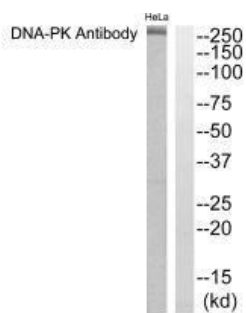
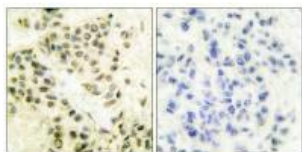
Synthesized peptide derived from human DNA-PK.

Storage:

Rabbit IgG in phosphate buffered saline (without Mg²⁺ and Ca²⁺), pH 7.4, 150mM NaCl, 0.02% sodium azide and 50% glycerol.

Product Images

Immunohistochemical analysis of paraffin-embedded human breast carcinoma tissue using DNA-PK antibody.



Western blot analysis of extracts from HeLa cells using DNA-PK antibody.

Immunofluorescence analysis of HeLa cells, treated with Forskolin (40nM, 30mins), using DNA-PK antibody.

