

HSPE1 Antibody



PACO23825

Product Information

Size:

100ul

Reactivity:

Human, Mouse, Rat

Source:

Rabbit

Isotype:

IgG

Applications:

ELISA, WB, IHC, IF

Recommended dilutions:

ELISA:1:2000-1:10000, WB:1:500-1:3000,
IHC:1:50-1:100, IF:1:100-1:500

Protein Background:

Eukaryotic CPN10 homolog which is essential for mitochondrial protein biogenesis, together with CPN60. Binds to CPN60 in the presence of Mg-ATP and suppresses the ATPase activity of the latter. HAMAP-Rule MF_00580.

Gene ID:

HSPE1

Uniprot

P61604

Synonyms:

CHAPERONIN 10 HOMOLOG; GroES HOMOLOG; HEAT-SHOCK 10-KD PROTEIN; cpn10 HOMOLOG; heat shock 10kDa protein 1 (chaperonin 10)

Immunogen:

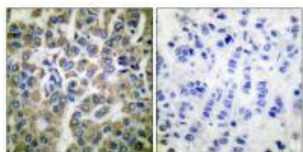
Synthesized peptide derived from human HSP10.

Storage:

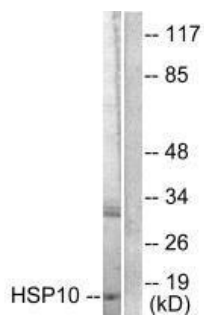
Rabbit IgG in phosphate buffered saline (without Mg²⁺ and Ca²⁺), pH 7.4, 150mM NaCl, 0.02% sodium azide and 50% glycerol.

Product Images

Immunohistochemical analysis of paraffin-embedded human breast carcinoma tissue using HSP10 antibody.



Western blot analysis of extracts from NIH/3T3 cells, using HSP10 antibody.



Immunofluorescence analysis of NIH/3T3 cells, using HSP10 antibody.

