

KRT7 Antibody



PACO23828

Product Information

Size:

100ul

Reactivity:

Human

Source:

Rabbit

Isotype:

IgG

Applications:

ELISA, WB, IHC, IF

Recommended dilutions:

ELISA:1:2000-1:10000, WB:1:500-1:3000,
IHC:1:50-1:100, IF:1:100-1:500

Protein Background:

Blocks interferon-dependent interphase and stimulates DNA synthesis in cells. Involved in the translational regulation of the human papillomavirus type 16 E7 mRNA (HPV16 E7).

Gene ID:

KRT7

Uniprot

P08729

Synonyms:

Keratin type II cytoskeletal 7; Cytokeratin-7; CK-7; K7; Sarcolectin

Immunogen:

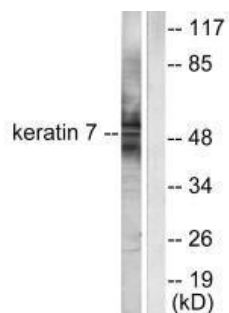
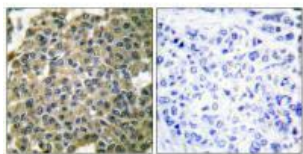
Synthesized peptide derived from human Keratin 7.

Storage:

Rabbit IgG in phosphate buffered saline (without Mg²⁺ and Ca²⁺), pH 7.4, 150mM NaCl, 0.02% sodium azide and 50% glycerol.

Product Images

Immunohistochemical analysis of paraffin-embedded human breast carcinoma tissue using Keratin 7 antibody.



Western blot analysis of extracts from HepG2 cells, using Keratin 7 antibody.

Immunofluorescence analysis of HepG2 cells, using Keratin 7 antibody.

