

XRCC6/XRCC5 Antibody



PACO23829

Product Information

Size:

100ul

Reactivity:

Human, Mouse, Rat

Source:

Rabbit

Isotype:

IgG

Applications:

ELISA, WB, IHC, IF

Recommended dilutions:

ELISA:1:2000-1:10000, WB:1:500-1:3000,
IHC:1:50-1:100, IF:1:100-1:500

Protein Background:**Gene ID:**

XRCC6/XRCC5

Uniprot

P12956/P13010

Synonyms:

86 kDa subunit of Ku antigen; ATP-dependent DNA helicase II; 80 kDa subunit; CTC box binding factor 85 kDa subunit; CTC85

Immunogen:

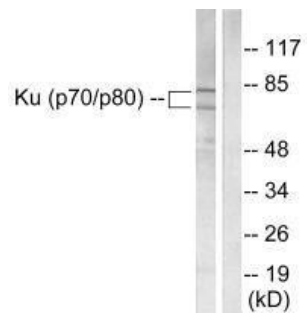
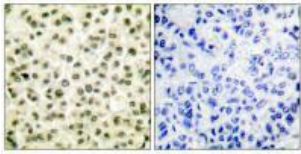
Synthesized peptide derived from human Ku70/80.

Storage:

Rabbit IgG in phosphate buffered saline (without Mg²⁺ and Ca²⁺), pH 7.4, 150mM NaCl, 0.02% sodium azide and 50% glycerol.

Product Images

Immunohistochemical analysis of paraffin-embedded human breast carcinoma tissue using Ku70/80 antibody.



Western blot analysis of extracts from LOVO cells, using Ku70/80 antibody.

Immunofluorescence analysis of A549 cells, using Ku70/80 antibody.

