

# MCM5 Antibody



PACO23831

---

## Product Information

**Size:**

100ul

**Reactivity:**

Human, Mouse, Rat

**Source:**

Rabbit

**Isotype:**

IgG

**Applications:**

ELISA, WB, IHC, IF

**Recommended dilutions:**

ELISA:1:2000-1:10000, WB:1:500-1:3000,  
IHC:1:50-1:100, IF:1:100-1:500

**Protein Background:**

Acts as component of the MCM2-7 complex (MCM complex) which is the putative replicative helicase essential for 'once per cell cycle' DNA replication initiation and elongation in eukaryotic cells. The active ATPase sites in the MCM2-7 ring are formed through the interaction surfaces of two neighboring subunits such that a critical structure of a conserved arginine finger motif is provided in trans relative to the ATP-binding site of the Walker A box of the adjacent subunit. The six ATPase active sites, however, are likely to contribute differentially to the complex helicase activity by similarity. Interacts with MCMBP.

**Gene ID:**

MCM5

**Uniprot**

P33992

**Synonyms:**

CDC46; DNA replication licensing factor MCM5; minichromosome maintenance deficient protein 5;

**Immunogen:**

Synthesized peptide derived from human MCM5 antibody.

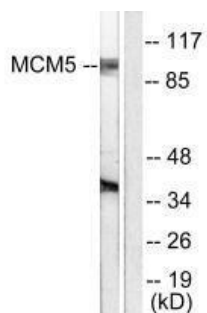
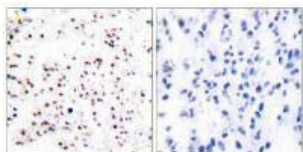
**Storage:**

Rabbit IgG in phosphate buffered saline (without Mg<sup>2+</sup> and Ca<sup>2+</sup>), pH 7.4, 150mM NaCl, 0.02% sodium azide and 50% glycerol.

## Product Images

---

Immunohistochemical analysis of paraffin-embedded human tonsil tissue using MCM5 antibody.



Western blot analysis of extracts from HepG2 cells, using MCM5 antibody.

Immunofluorescence analysis of HepG2 cells, using MCM5 antibody.

