

PACO23837

Product Information

Size:

100ul

Reactivity:

Human, Mouse, Rat

Source:

Rabbit

Isotype:

IgG

Applications:

ELISA, WB, IHC, IF

Recommended dilutions:

ELISA:1:2000-1:10000, WB:1:500-1:3000,
IHC:1:50-1:100, IF:1:100-1:500

Protein Background:

This is an intracellular thiol proteinase inhibitor. Tightly binding reversible inhibitor of cathepsins L, H and B.

Gene ID:

CSTB

Uniprot

P04080

Synonyms:

CPI-B; CST6; CYTB; EPM1; PME

Immunogen:

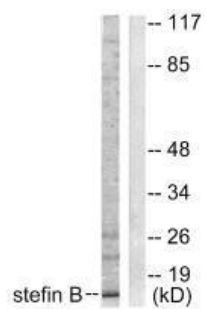
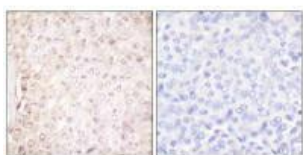
Synthesized peptide derived from human stefin B.

Storage:

Rabbit IgG in phosphate buffered saline (without Mg²⁺ and Ca²⁺), pH 7.4, 150mM NaCl, 0.02% sodium azide and 50% glycerol.

Product Images

Immunohistochemical analysis of paraffin-embedded human breast carcinoma tissue using Stefin B antibody.



Western blot analysis of extracts from A549 cells, using Stefin B antibody.

Immunofluorescence analysis of A549 cells, using Stefin B antibody.

