
Product Information

Size:

100ul

Reactivity:

Human, Mouse

Source:

Rabbit

Isotype:

IgG

Applications:

ELISA, WB, IHC, IF

Recommended dilutions:

ELISA:1:2000-1:10000, WB:1:500-1:3000,
IHC:1:50-1:100, IF:1:100-1:500

Protein Background:

Casein kinases are operationally defined by their preferential utilization of acidic proteins such as caseins as substrates. Can phosphorylate a large number of proteins. Participates in Wnt signaling. Phosphorylates DVL1. Central component of the circadian clock. In balance with PP1, determines the circadian period length, through the regulation of the speed and rhythmicity of PER1 and PER2 phosphorylation. Controls PER1 and PER2 nuclear transport and degradation. Inhibits cytokine-induced granulocytic differentiation.

Gene ID:

CSNK1E

Uniprot

P49674

Synonyms:

CK1-epsilon; CKI-epsilon; CKIe; CSNK1E; Casein kinase I

Immunogen:

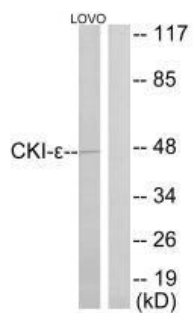
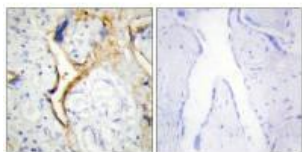
Synthesized peptide derived from internal of human CKI- epsilon.

Storage:

Rabbit IgG in phosphate buffered saline (without Mg²⁺ and Ca²⁺), pH 7.4, 150mM NaCl, 0.02% sodium azide and 50% glycerol.

Product Images

Immunohistochemistry analysis of paraffin-embedded human placenta tissue using CKI- epsilon antibody.



Western blot analysis of extracts from LOVO cells, using CKI- epsilon antibody.

Immunofluorescence analysis of HeLa cells, using CKI- epsilon antibody.

